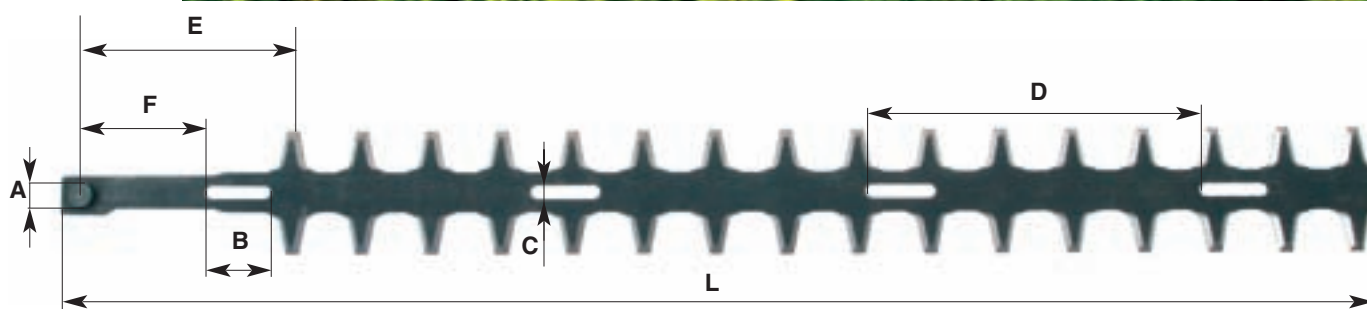


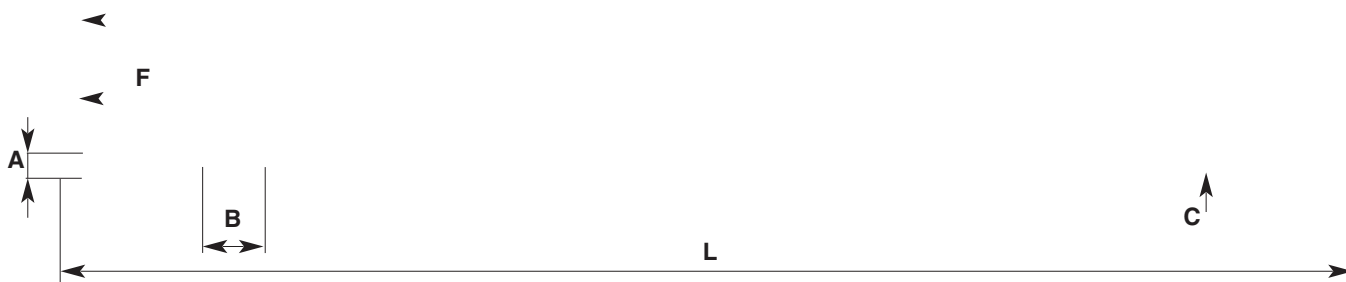


LAME PER TAGLIASIEPI A TAGLIO DOPPIO

ADATTABILI ALLE SEGUENTI MARCHE:



APPLICAZIONE	A mm	B mm	C mm	D mm	E mm	F mm	L mm	POSIZIONE	CODICE
ALPINA TS24	12	34	6.2	163.4	88	61	634	SUPERIORE	BM 2077
DOLMAR HT2256D									
EFCO TS322 - TS326									
IDEAL TT600 - K600D - K620									
MAORI TT600									
MARUYAMA HT230D	12	34	6.2	163.4	106	61	651	INFERIORE	BM 2078
OLEO MAC HT22 - HT26									
ROBIN HT221									
ZENOAH CHT2300									
EFCO - OLEO MAC HT27	10	50	8.3	123	140		835	SUP. = INF.	BM 10394
IDEAL TT760 - K760D	12	32	6.2	163.4	86	61	782	SUPERIORE	BM 3052
MAORI TT760									
MARUYAMA HT230DL	12	32	6.2	163.4	113.5	61	793	INFERIORE	BM 3053
OLEO MAC TS33 - HT43 - EFCO TS330 - TS355									
STIHL HS74 - HS75 - HS246	10	60/76	8.2	140	94		630	SUP. = INF.	BM 6192
STIHL HS74 - HS75 - HS80	10	60	8.2	140	94		773	SUP. = INF.	BM 6191
STIHL	10	68/39	8.2	68	113		732	SUP. = INF.	BM 9551
STIHL	10	68/39	8.2	68	94		855	SUP. = INF.	BM 9552
KAAZ TM260	10	34.5	7.2	164	119.5	90.7	684	SUP. = INF.	BM 8140
KAAZ TM320	10	34.5	7.2	164	119.5	90.7	840	SUP. = INF.	BM 4136
TAS TANAKA THT2100	9.3	34.5	7	155.3	101.5	65	591	SUP. = INF.	BM 8141
TAS TANAKA THT210	9.3	32	7	139	101.5	83	696	SUP. = INF.	BM 8142
TAS TANAKA	12	34	6.2	164	87	61	633	SUP. = INF.	BM 10458
TAS TANAKA	12	34	6.2	164	105	61	790	SUP. = INF.	BM 10459



APPLICAZIONE	A mm	B mm	C mm	D mm	E mm	F mm	L mm	POSIZIONE	CODICE
ALPINA TS25	12	34	6.2	163.4	85	70	780	SUPERIORE	BM 1347
DOLMAR HT2267									
IDEAL TT750 - K750S									
MAORI TT750									
MARUYAMA HT230	12	34	6.2	163.4	67.5	60	790	INFERIORE	BM 1342
ROBIN HT750									
EFCO TS322S - HT326S	12	32.5	6.2	163.4	86	61	640	SUPERIORE	BM 2437
IDEAL TT650									
OLEO MAC HT22 - HT26									
ZENOAH HT2300	12	31.8	6.2	163.4	70	61	650	INFERIORE	BM 5584
ECHO 210 - 2100 - 2300	10	33	7	164	85	82	830	SUPERIORE	BM 7593
	10	33	7	164	103	82	830	INFERIORE	BM 7594
GOLDEN STAR	9.3	33.5	7.2	164	105	76	82.5	SUPERIORE	BM 5031
	9.3	35	7.2	164	120	76	80.7	INFERIORE	BM 5030
KAAZ TM275	10	34.5	7.2	164	119.5	90.7	738	SUPERIORE	BM 8135
	10	34.5	7.2	164	102	90.7	738	INFERIORE	BM 8136
KAAZ TM310	10	34.5	7.2	164	119.5	90.7	841	SUPERIORE	BM 8139
	10	34.5	7.2	164	102	90.7	841	INFERIORE	BM 8138
TAS TANAKA THT230 - 240	9.3	33	7	163.5	85	56	820	SUPERIORE	BM 7595
	9.3	33	7	163.5	70	56	820	INFERIORE	BM 7596
TAS TANAKA THT262	9.3	33	7	163.5	86.5	57.3	825	SUPERIORE	BM 8137
	9.3	33	7	163.5	70	56	820	INFERIORE	BM 7596



RICAMBI MANOVELLISMI TAGLIASIEPI OCHIAI

ADATTABILI ALLE SEGUENTI MARCHE:



	IMPUGNATURA ANTERIORE	BM 9854	TT600-TT760 K600D-K620D K760D-K518D	Rif.orig. 118.142	1 pz
	IMPUGNATURA ANTERIORE	BM 9855	TT750 KT750S	Rif.orig. 136.190	1 pz
	IMPUGNATURA POSTERIORE	BM 10281	Completa TT600D-TT760 K518D-K600D K620D-K760D Regolabile	Rif.orig. 361109000M	1 pz
	SEMIIMPUGNATURA POST.DX	BM 2162	K518 K600D K620D K760D Tipo vecchio	Rif.orig. 118.149	1 pz
	SEMIIMPUGNATURA POST.SX	BM 2164	K518D-K600D K620D-K760D TT600-TT750S Tipo vecchio	Rif.orig. 118.150	1 pz
	CARTER SUPERIORE	BM 5706	TT600 K600D K620D	Rif.orig. 118.103	1 pz
	CARTER SUPERIORE	BM 9856	K750D TT760	Rif.orig. 118.141	1 pz
	CARTER SUPERIORE	BM 4673	K750S TT750S	Rif.orig. 136.143	1 pz
	CARTER INFERIORE	BM 3564	TT600-TT760 K600D-K760D K750S	Rif.orig. 118.104	1 pz
	INGRANAGGIO	BM 5680	Fil. M10 Z = 14 Lunghezza:43mm K600D K620D	Rif.orig. 118.102	1 pz
	INGRANAGGIO	BM 4672	Fil. M12 Z = 14 Lunghezza:43mm K750S-K760D TT750-TT760	Rif.orig. 136.142	1 pz
	INGRANAGGIO CORONA	BM 1401	Z = 58 Ø 75mm K620D-K600D K760D TT600-TT750 TT760	Rif.orig. 118.105	1 pz
	ECCENTRICO	BM 2853	H = 36mm K600D-K620D K760D-K750S TT600-TT750 TT760	Rif.orig. 118.143	1 pz
	BIELLETTA	BM 2927	Ø min:12mm Ø mag:27mm L.tot.90mm Con rullini K600D-K620D K750S-K760D TT600-TT750 TT760	Rif.orig. 118.100	1 pz
	FELTRO	BM 2930	35 mm 20 mm 15 mm K600D-K620D K760D-K750S TT600-TT750 TT760	Rif.orig. 118.101	1 pz
	CUSCINETTI	1 pz	D 28 X d 12 X L 8 mm D 22 X d 8 X L 7 mm D 26 X d 10 X L 8 mm	BM 5677 BM 4384 BM 4219	1 pz
	VITI LAME	1 pz	M 6 X 29 mm M 6 X 22 mm M 6 X 19 mm	BM 2499 BM 2500 BM 2595	1 pz